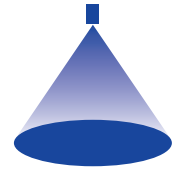


➤ Axial-flow full cone nozzles Series 468/494



Features:

- Extremely uniform liquid distribution
- Assembly with retaining nut

Applications:

- Surface spraying
- Chemical process engineering
- Cleaning and washing processes
- Water treatment



Series 468/494

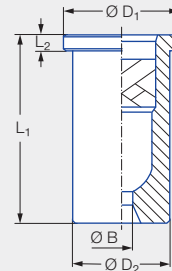


Figure 1
(468)

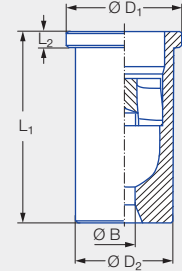



Figure 2
(494)

Code	Figure	Dimensions [mm]			Weight [g] (brass)
		L ₂	Ø D ₁	Ø D ₂	
Assembly with retaining nut 3/8 BSPP	1	2.00	14.80	12.65	18.00
	2	2.00	14.80	12.65	18.00

Spray angle	Ordering no.				Bore diameter B [mm]	Narrowest free cross sections Ø [mm]	L ₁ [mm]	V̇ water [l/min]						Spray diameter D [mm] (at p = 2 bar)	
	Type	Mat. no.						p [bar]						H = 250 [mm]	H = 500 [mm]
		1Y	30	5E				0.5	1.0	2.0	3.0	5.0	10.0		
60°	494.604	●	●		2.05	2.05	18.00	1.81	2.39	3.15	3.70	4.54	6.00	270	540
	468.644			●	2.32	2.80	24.50	2.30	3.03	4.00	4.70	5.77	7.61	290	570
	494.644		●		2.32	2.80	24.50	2.30	3.03	4.00	4.70	5.77	7.61	270	540
	494.684		●		2.63	2.80	24.50	2.87	3.79	5.00	5.88	7.21	9.52	280	550
	494.724	●	●		2.96	2.80	24.50	3.62	4.77	6.30	7.41	9.09	11.99	280	560
90°	468.526			●	1.71	1.55	18.00	1.15	1.52	2.00	2.35	2.89	3.81	460	780
	494.526	●	●		1.71	1.55	18.00	1.15	1.52	2.00	2.35	2.89	3.81	500	910
	494.846	●	●		4.95	3.20	24.50	7.18	9.47	12.50	14.70	18.03	23.80	550	1,000
120°	494.368		●		0.85	0.65	18,00	0.36	0.48	0.63	0.74	0.91	1.20	700	1,240
	494.408	●	●		1.20	1.20	18,00	0.57	0.76	1.00	1.18	1.44	1.90	720	1,260
	494.488	●	●		1.49	1.55	18,00	0.92	1.21	1.60	1.88	2.31	3.05	760	1,300
	494.528	●	●		1.70	1.75	18,00	1.15	1.52	2.00	2.35	2.89	3.81	780	1,320

Conversion formula for this series: $\dot{V}_2 = \dot{V}_1 \cdot \left(\frac{p_2}{p_1}\right)^{0.4}$
(≤ 10 bar)

Ordering Type + Material no. = Ordering no.
example: 494.604 + 1Y = 494.604.1Y

 Assembly accessories can be found in Chapter 9 "Accessories".